

Mac OS X – How to access the Edimax Router’s Web-based configuration page.+

We’ll need to open a web-browser, i.e. Safari and .enter 192.168.2.1 into the “Address Bar”, and press [Enter]. We’ll need to check or setup an Ethernet connection.



Fig. 1

Click on the **Apple Menu**, and choose **System Preferences**.



Fig. 2

Click on **Network**

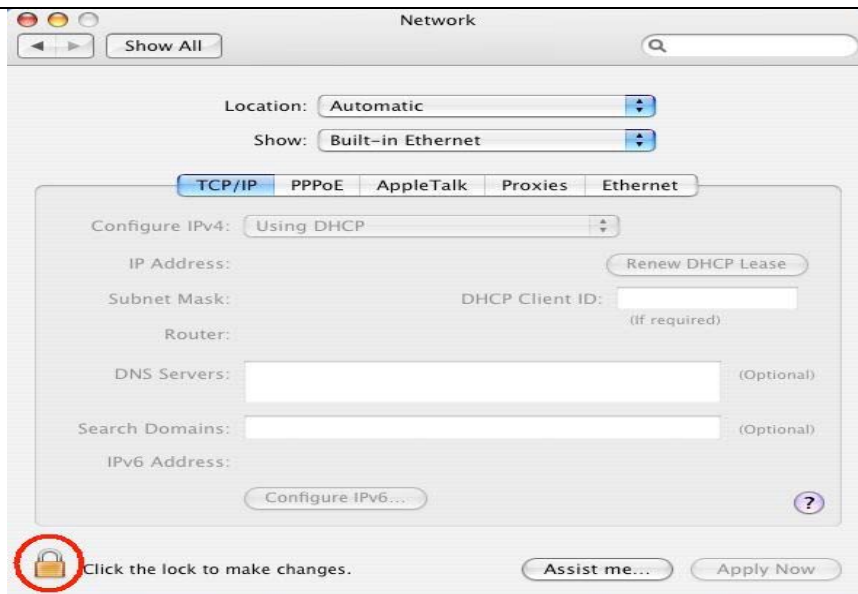


Fig. 3

If Network Settings are “grayed out,” then click on the [Lock] icon on the lower left corner.

Otherwise, skip to fig. 5



Fig. 4

Enter the primary administrator password or an alternative administrator's **Name** and **Password**

Click on **[OK]**

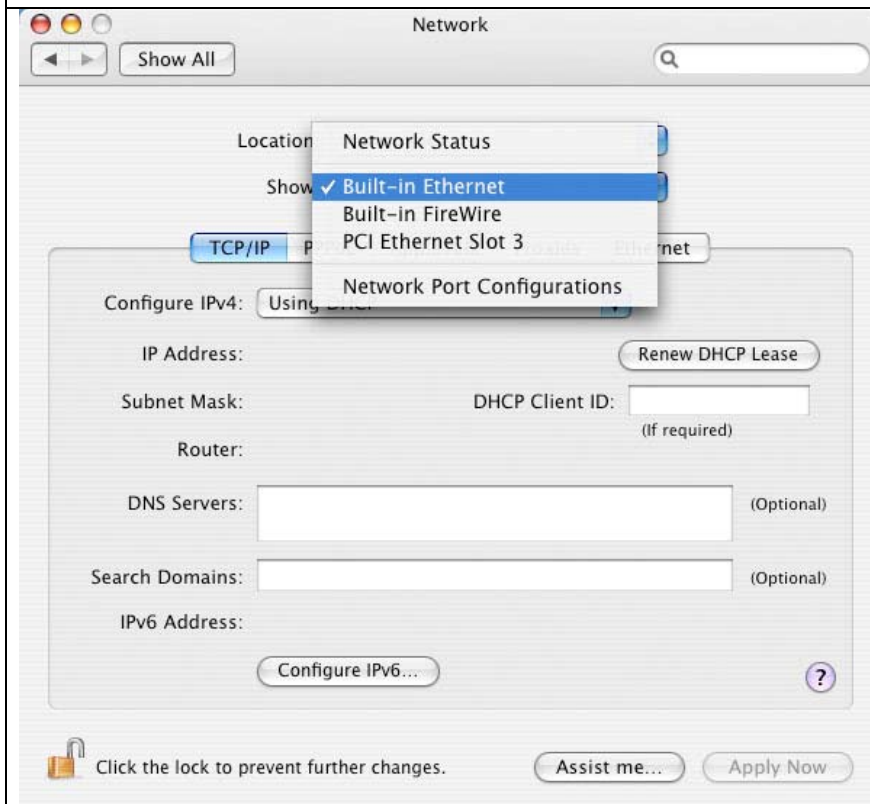


Fig. 5

Select the **Built-in Ethernet** port. If you don't have it, choose the Active Network Ports from the show menu. Select the port that you want to use, and click **[Apply Now.]**

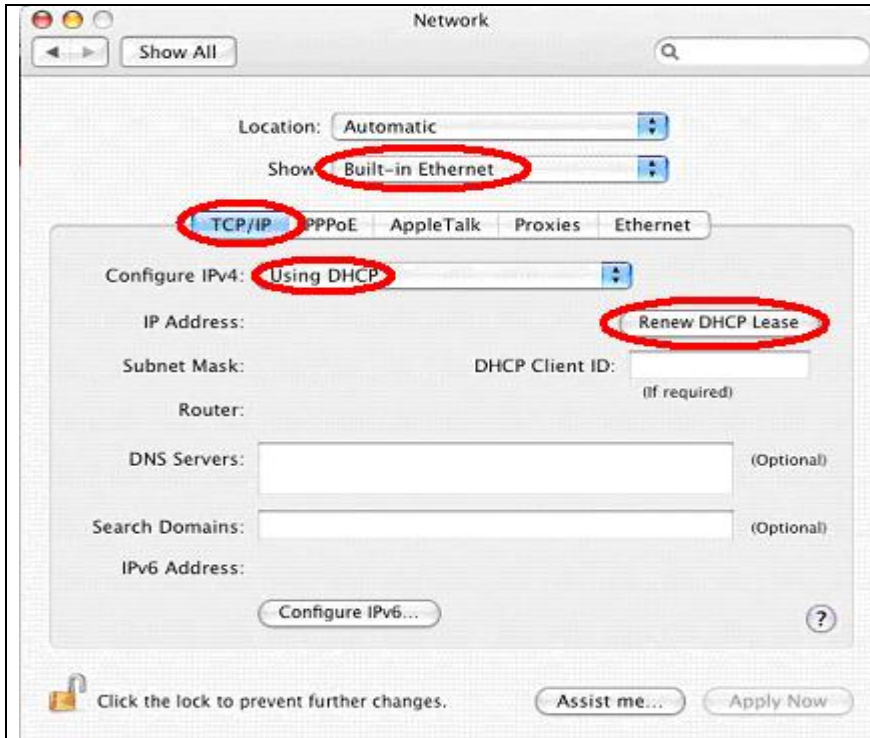


Fig. 6

Make sure the TCP/IP is highlighted.

We'll be using DHCP, a method of automatically getting a TCP/IP configuration from the Edimax router.

Make sure that your Ethernet Port is connected. (One way is to check on the link light on your Ethernet adapter.)

Click on **[Renew DHCP Lease]**

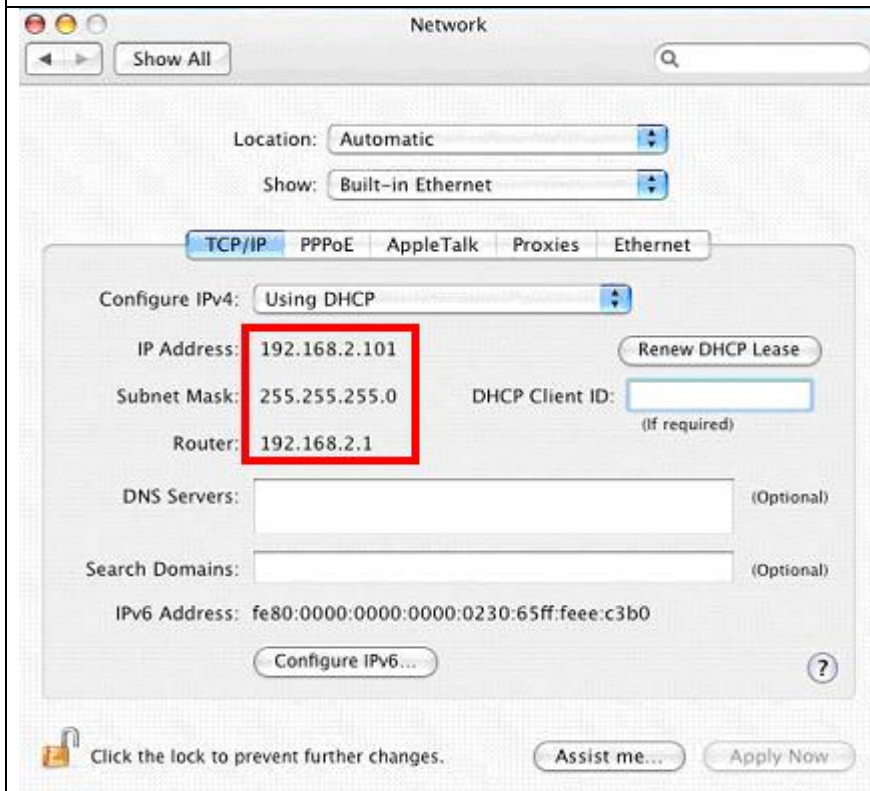


Fig. 7

You should automatically get a TCP/IP configuration as shown. If not, click on **[Renew DHCP Lease]** again



Fig. 8

Now, open a Web-browser, i.e. Safari, and enter 192.168.2.1 in the Address Bar.

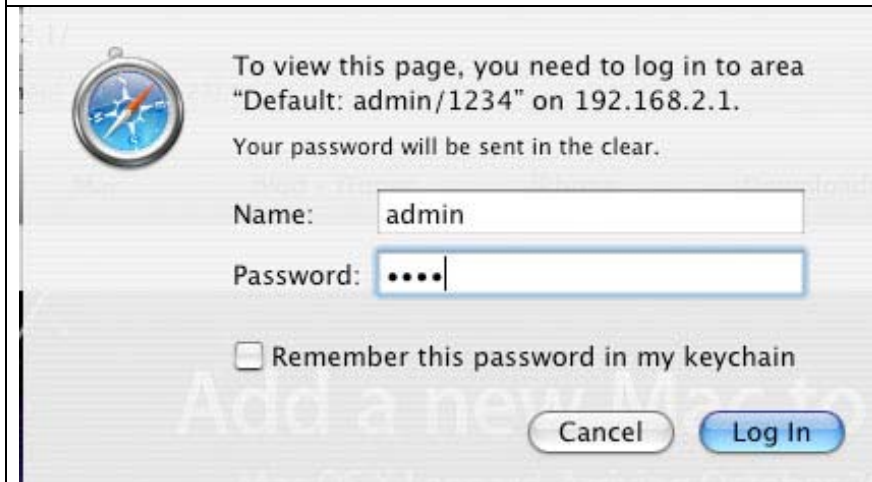


Fig. 9

A dialog box will "pop-up." You should enter:

Name: "admin"

Password: "1234"

(without the quotes.)



Fig. 10

Congratulation! You've successfully configured your MAC to access the WEB-based Configuration Page.