

EDIMAX COMPUTER INC.

Edimax EW-7811Un

150Mbps Wireless IEEE802.11b/g/n Nano USB Adapter

Mac OSX

Quick Start

Manual

© 2011 Edimax Computer
3350 Scott Blvd., Building #15
Santa Clara, California 95054, USA
Phone 408-496-1105 • Fax 408-980-1630

www.edimax.us


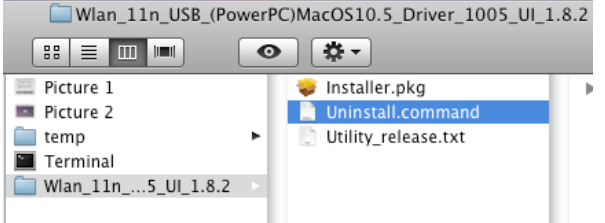

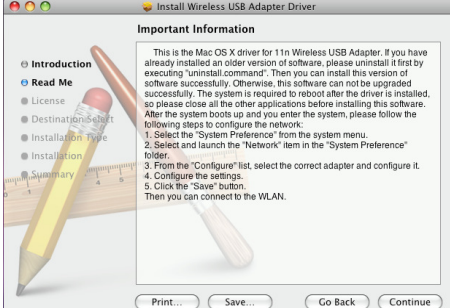
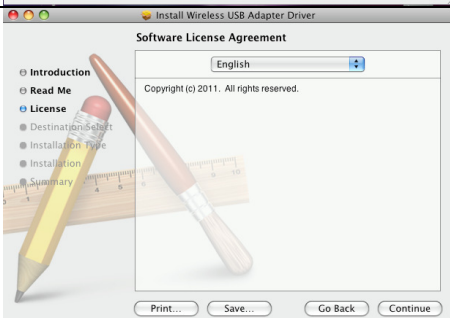

Edimax EW-7811Un

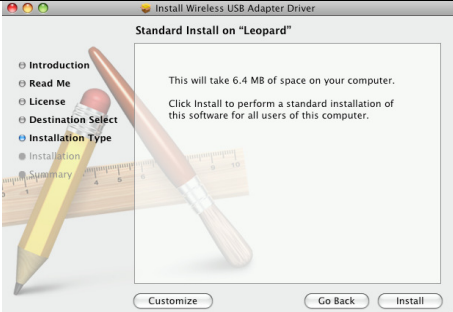

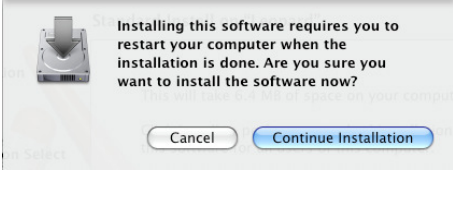

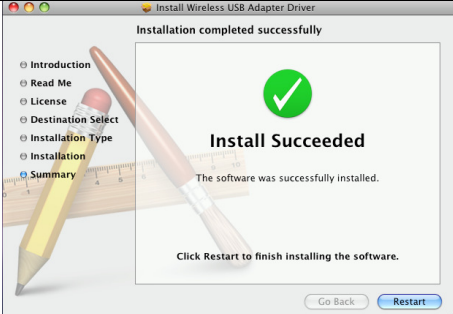
Congratulations on your purchase of the Edimax EW-7811Un. It is currently the smallest wireless adapter, and we back them up with great technical support. We are committed to making you a success because our success depends on yours.

This is a detailed step-by-step installation instruction for Mac OSX 10.5 (Leopard,) and it is basically the same for OSX 10.6 (Snow Leopard), and OSX 10.4 (Tiger)

Assumptions:

1. You have the Edimax EW-7811Un Wireless USB adapter.
2. You have installed the adapter.
3. You have started-up the Mac and you are on the desktop.
4. You are running OSX 10.5 (Leopard.)
5. You download the latest EW-7811Un Mac driver from <http://www.edimax.us> Download section. You have the downloaded driver file in the desktop.

	<p>Fig. 1 If the download file is a zip file, unzip the file to get the folder of the driver. Double click on the folder..</p>
	<p>Fig. 2 Double click on Installer.pkg file.</p>
	<p>Fig. 3 Welcome screen appears. The installation process will start. Click on Continue button.</p>
	<p>Fig. 4 Read the information. Click on Continue button.</p>
	<p>Fig. 5 Click on Continue button.</p>
	<p>Fig. 6 Click on Agree button.</p>

	<p>Fig. 7</p> <p>It tells you how much disk space is required. Click on Install.</p>
	<p>Fig. 8</p> <p>If you have an Administrator account with password, you will need to enter it.</p> <p>We entered our password and click on OK.</p>
	<p>Fig. 9</p> <p>Acknowledge you the computer needs to restart after the software been installed.</p> <p>Click on Continue Installation.</p>
	<p>Fig. 10</p> <p>The software is installing.</p>
	<p>Fig. 11</p> <p>Congratulations! You've finished installing your Mac OSX 10.5 driver.</p> <p>Click on Restart. The Mac computer will restart automatically.</p>
<p>If the EW-7811Un is not plugged into a USB port of your computer, please plug it in.</p>	

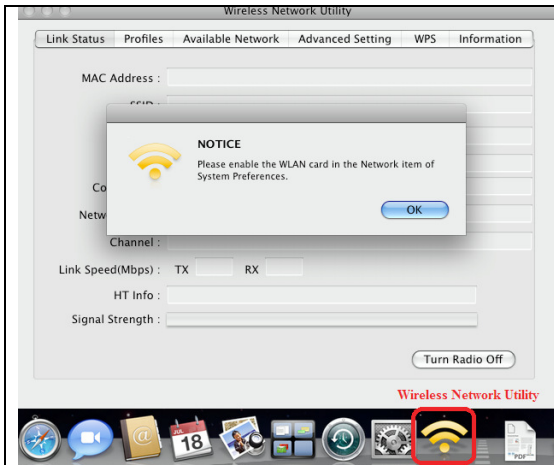


Fig. 12

Upon Restarting, you should see the Wireless Utility showing in the system tray.

The Notice window pops up and reminds you enable the WLAN Card in the Network Item of System Preferences. Click on OK.

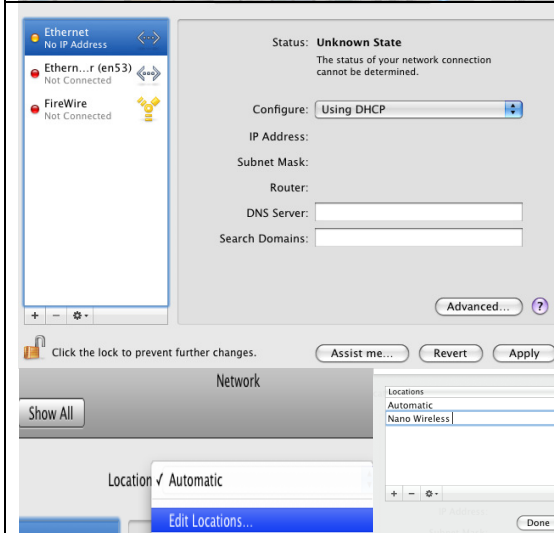


Fig. 14

Open System Preference and go to Network.

If you see a new Ethernet adapter show up, that is the Nano Wireless adapter. Just click on Apply.

If you do not see a new Ethernet adapter show up, you can Edit Location and add a new location. The default name for Location is Untitled. You can change it to a different name. Click on Done.

While you are back to Network status, you should see the new Ethernet adapter show up.

Close Network.

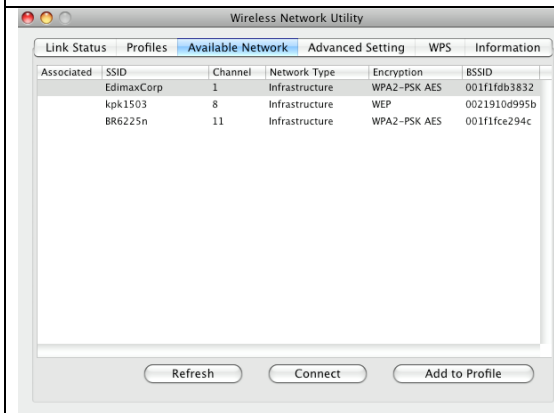


Fig. 15

Go back to Wireless Network Utility.

Go to the tab of “Available Network”. Your 2.4GHz wireless network should show up. Select your wireless network. Click on “Add to Profile”.

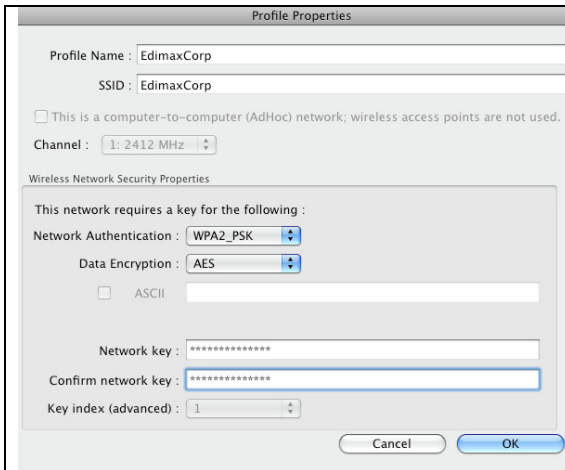


Fig. 16

In the field of “Network Key” and “Confirm network key”, enter the wireless security key (also known as Passphrase). Click on OK.

Please note the wireless encryption key is case sensitive. Most wifi issue is caused by wrong encryption key. If you do not know your key, you will need to check the wireless security settings in your wireless router.

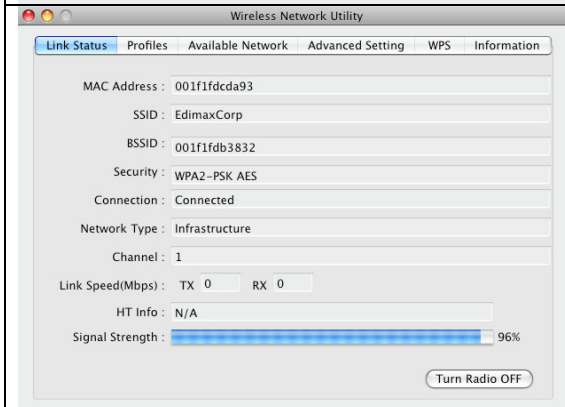


Fig. 17

The wireless network utility shows “Connected” in Link Status.

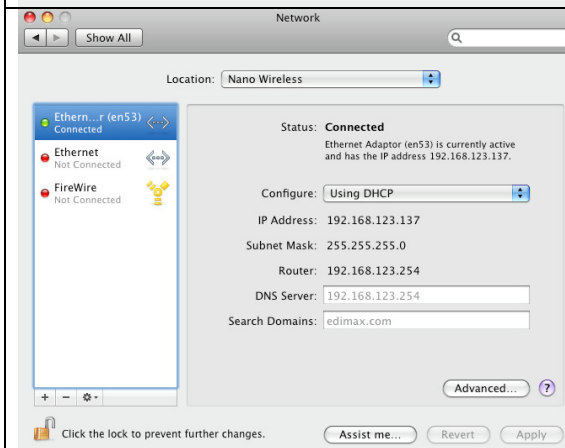


Fig. 18

Go to Network in System Preference to verify the IP address of the new adapter.

You might have an IP address like 192.168.x.x or 10.0.1.x.

If the IP address is a self-assigned IP like 169.254.x.x., the wifi connection is failed and the adapter does not get an IP address from the wireless router.

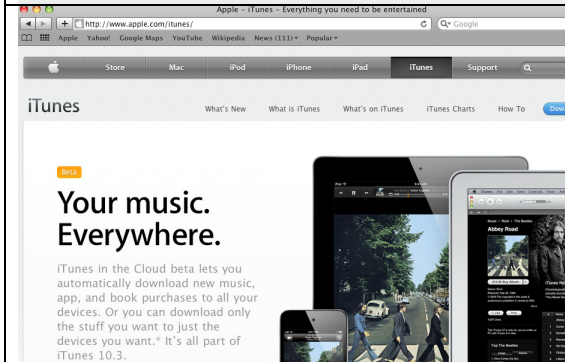


Fig. 19

Open browser like Safari to get on Internet.

Congratulations. Your wireless connection is successful.