

How to view Edimax IP Camera from Internet

Introduction

Edimax IP Cameras are designed to work in a Local Area Network (LAN) and over the Internet.

Within a LAN, IP Camera can be viewed from any computer located in the local network which the cameras are attached to. Users use the local IP address like 192.168.2.3 via Windows IE browser. For the basic configuration about IP Camera, please refer the user manual.



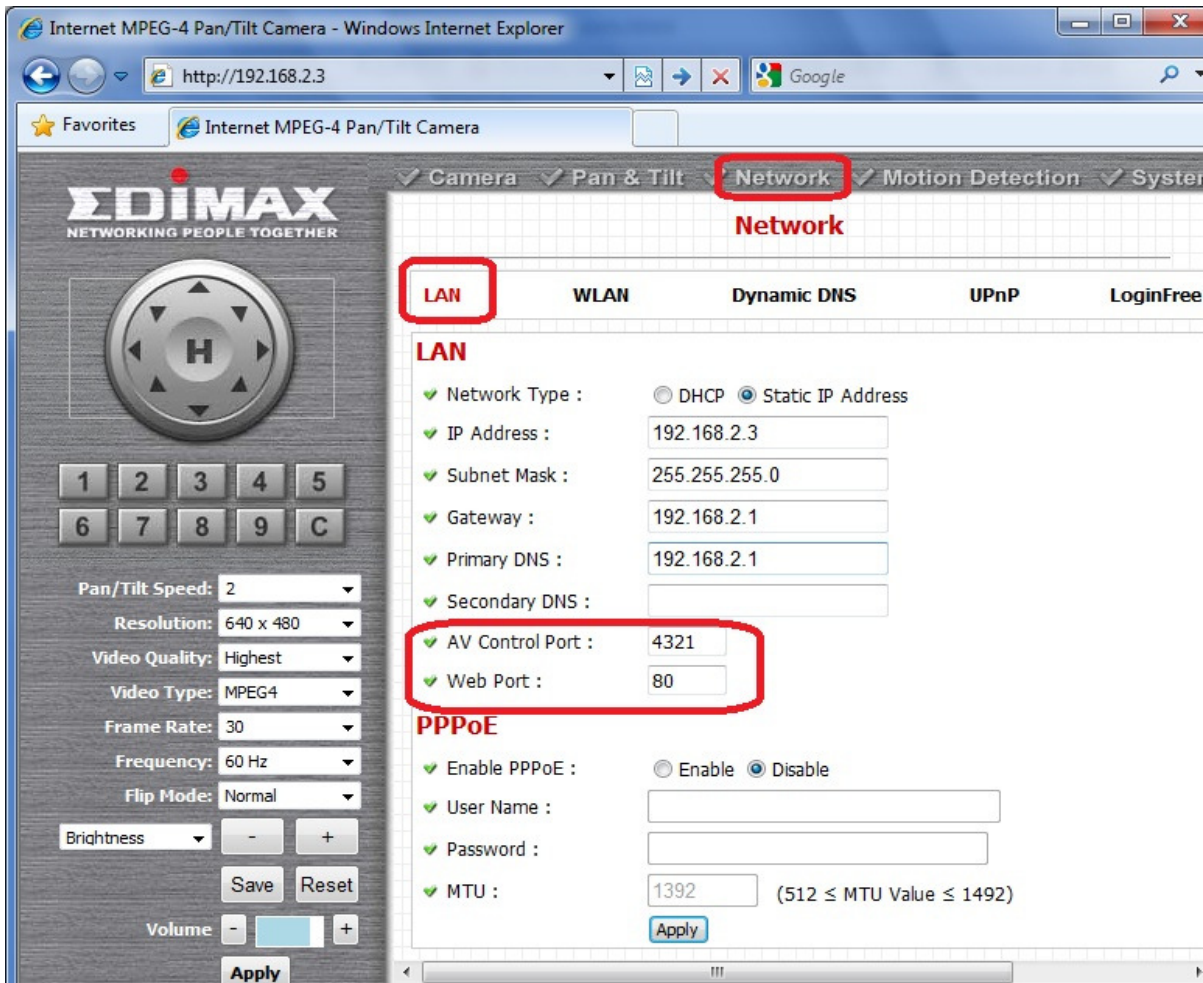
To allow the IP camera to be viewed not only locally but remotely from Internet, some additional configuration needed to be done. Most people use broadband router to share a single “real” IP address on Internet. Also the broadband router can prevent incoming connection from Internet. Therefore, to allow the access to the IP Camera from Internet, you’ll need to forward the incoming traffic to the specified IP camera. The way to configure port forwarding is different among various routers. You may check the manual of your router for more detail.

Here are some advices about how to configure the port forwarding in network router.

Step 1 Check the Ports used by your IP Camera.

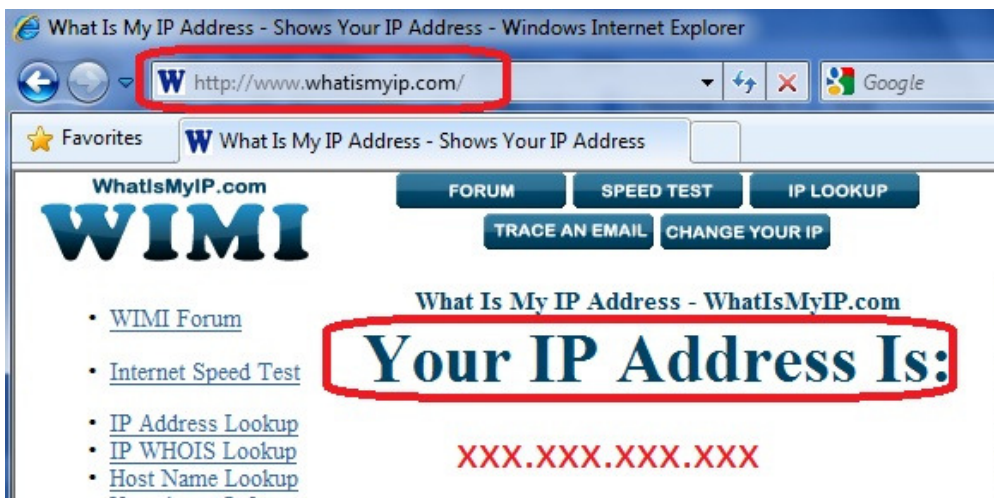
Go to the IP Camera’s page, go to Network settings. Go to LAN. Find the AV Control Port number and the WEB port number.

By default, the AV Control Port is 4321 and Web port is 80.



Step 2 Find out the 'real' IP address of your network.

Go to the web site <http://www.whatismyip.com> then take a note of your IP address. To remote view the IP camera from Internet, you will need to use that IP address.



Step 3. Login to the router configuration web page.

For Edimax router, the default login IP address is <http://192.168.2.1> with username admin and password 1234.

Go to General Setup, Click on NAT, Click on “Port Forwarding”.

Enable the check box of “Enable Port Forwarding”.

In the box of Private IP, enter the IP address of IP Camera. For example, 192.168.2.3.

In the Port Range, enter 80 – 80. Click on Add.

The screenshot shows the Edimax router configuration web page in Internet Explorer. The browser address bar shows <http://192.168.2.1/index.asp>. The page title is "Wireless Router". The navigation menu includes "Quick Setup", "General Setup", "Status Info", and "System Tools". The "General Setup" menu is expanded, showing "NAT" selected. The "Port Forwarding" section is active, displaying the following settings:

- Enable Port Forwarding
- Private IP: 192.168.2.3
- Type: Both
- Port Range: 80 - 80
- Comment: (empty)

Buttons for "Add" and "Reset" are visible. Below the form is the "Current Port Forwarding Table":

NO.	Private IP	Type	Port Range	Comment	Select
1	192.168.2.3	TCP+UDP	80		<input type="checkbox"/>

Buttons for "Delete Selected", "Delete All", "Reset", "Apply", and "Cancel" are also present.

Repeat the entry to add port 4321. Click on Add button.

This is a close-up of the "Enable Port Forwarding" form. The "Private IP" field contains "192.168.2.3", the "Type" is "Both", and the "Port Range" is "4321 - 4321". The "Add" button is highlighted.

Private IP	Type	Port Range	Comment
192.168.2.3	Both	4321 - 4321	

From the Port Forwarding table, the port 4321 and port 80 are forwarded to IP camera. Click on Apply button.

Wireless Router - Windows Internet Explorer

http://192.168.2.1/index.asp

EDIMAX NETWORKING PEOPLE TOGETHER

Quick Setup General Setup Status Info System Tools

System
WAN
LAN
Wireless
QoS
NAT
Port Forwarding
Virtual Server
Special applications
UPnP Setting
ALG Settings
Firewall

Entries in this table allow you to automatically redirect common network services to a specific machine behind the NAT firewall. These settings are only necessary if you wish to host some sort of server like a web server or mail server on the private local network behind your Gateway's NAT firewall.

Enable Port Forwarding

Private IP	Type	Port Range	Comment
<input type="text"/>	Both	<input type="text"/> - <input type="text"/>	<input type="text"/>

Add Reset

Current Port Forwarding Table:

NO.	Private IP	Type	Port Range	Comment	Select
1	192.168.2.3	TCP+UDP	80		<input type="checkbox"/>
2	192.168.2.3	TCP+UDP	4321		<input type="checkbox"/>

Delete Selected Delete All Reset

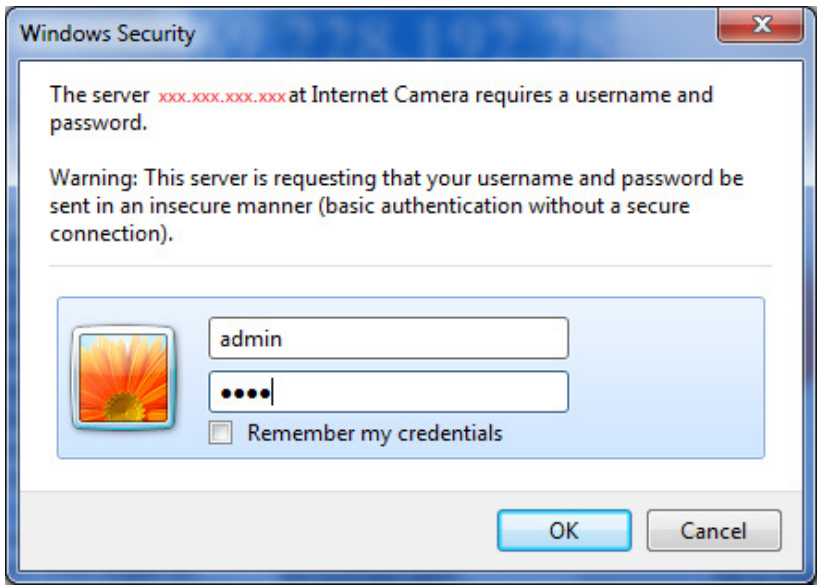
Apply Cancel

Internet | Protected Mode: On 100%

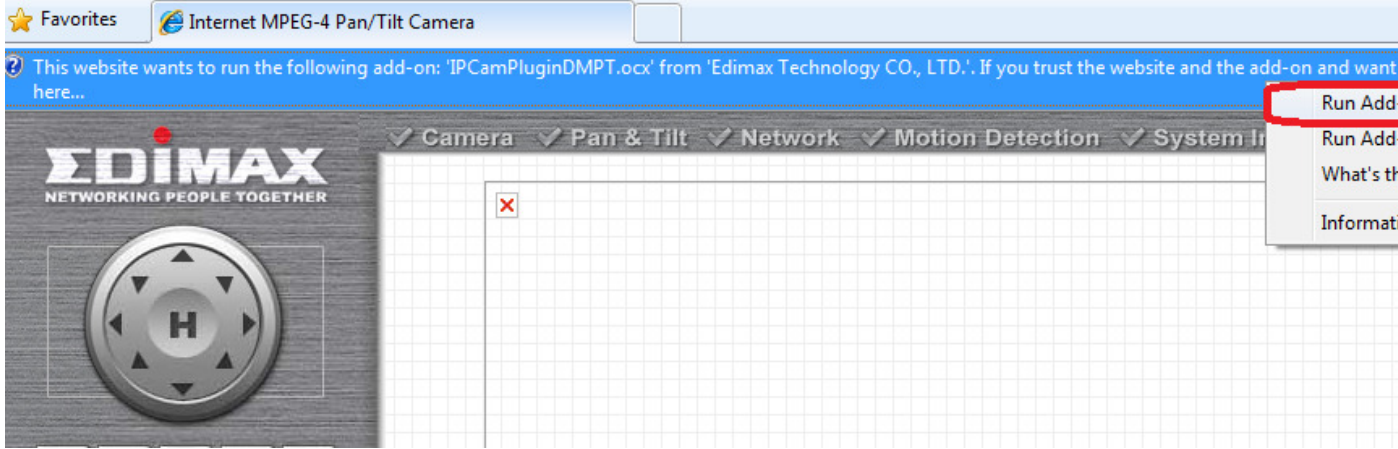
Final step. Remote view the IP Camera from Internet.

From a computer on Internet (You can ask your friend to do this), open Internet Explorer. In the Address line, enter the public IP address that you obtained on step 2 above. Like <http://xxx.xxx.xxx.xxx>.

The IP Camera asks for the username and password.



Once the correct username and password are entered, IE displays the following message. Click on Run Add-on. Then you can view the Camera.



Internet MPEG-4 Pan/Tilt Camera - Windows Internet Explorer

http://xxx.xxx.xxx

Internet MPEG-4 Pan/Tilt Camera

Camera Pan & Tilt Network Motion Detection System Info Account

EDIMAX

NETWORKING PEOPLE TOGETHER

Pan/Tilt Speed: 2
Resolution: 640 x 480
Video Quality: High
Video Type: MPEG4
Frame Rate: 30
Frequency: 60 Hz
Flip Mode: Normal
Brightness: - +
Volume: - +

Multi-Camera Display Apply

Snapshot E:\ Recording C:\ Speak to IPCam

Digital Zoom Fit to Window Size Full Screen

Internet | Protected Mode: Off