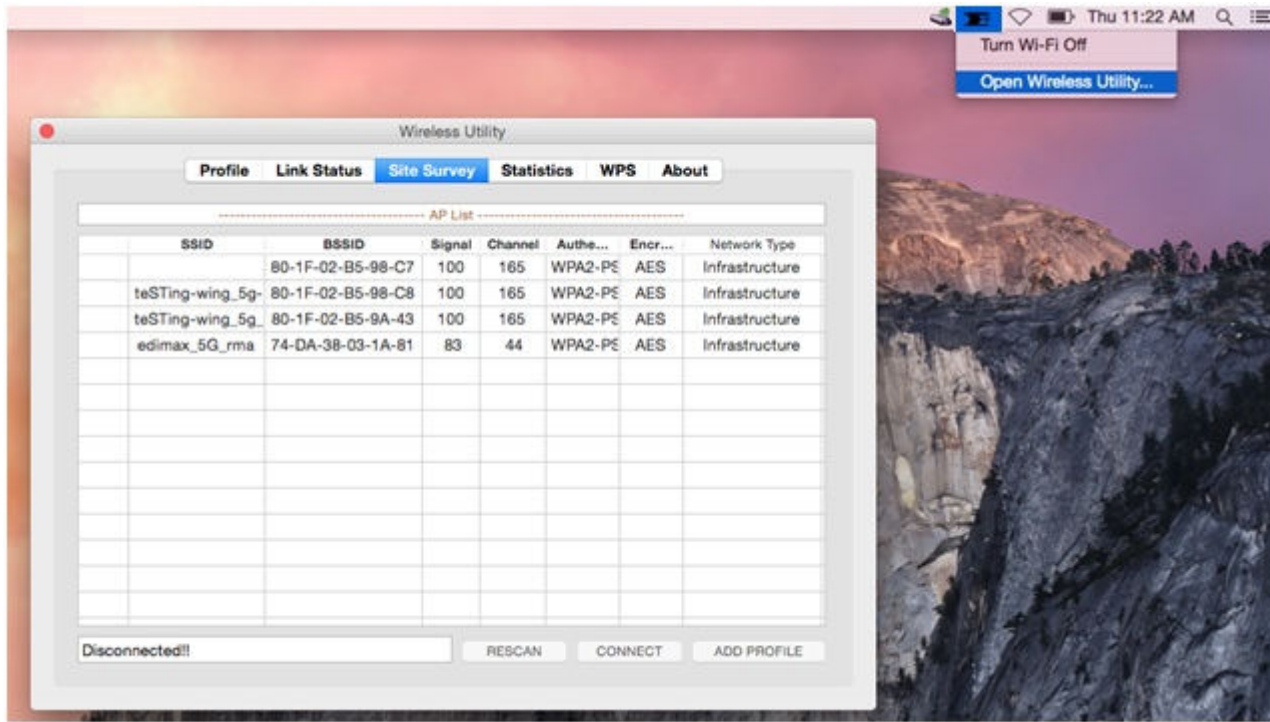


## How to use Edimax AC450 EW-7711MAC Wireless Utility in Mac

Before you start this instruction, make sure you have installed the software.

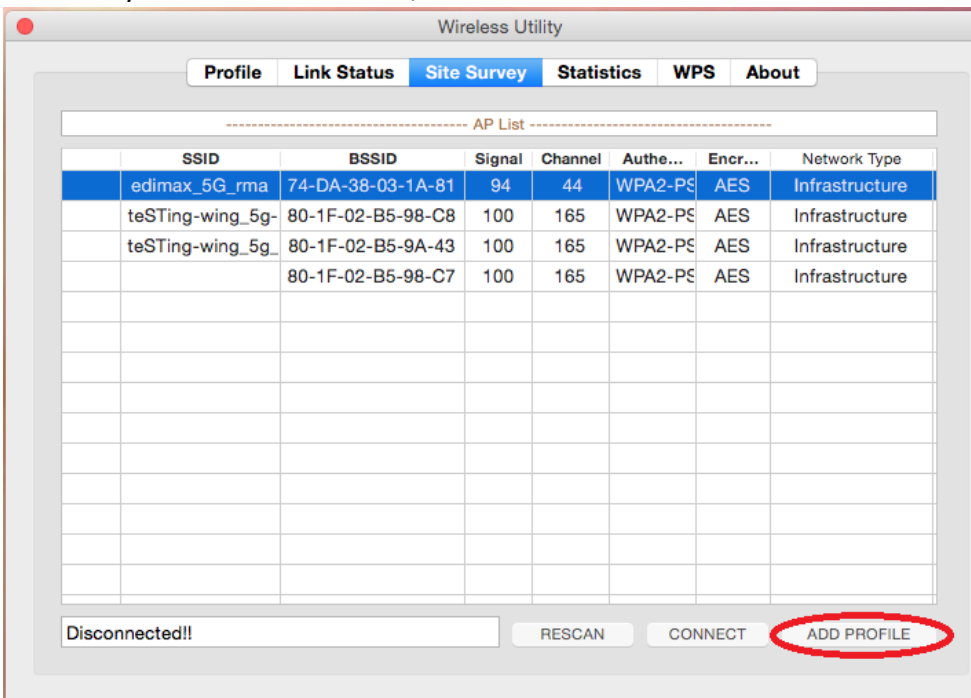
1. While you plug in EW-7711MAC adapter to your Mac, the Wireless Utility should be launched automatically.

In case you do not get the Wireless Utility, you can click on the small black **E** icon on the top. Click on “**Open Wireless Utility**”.



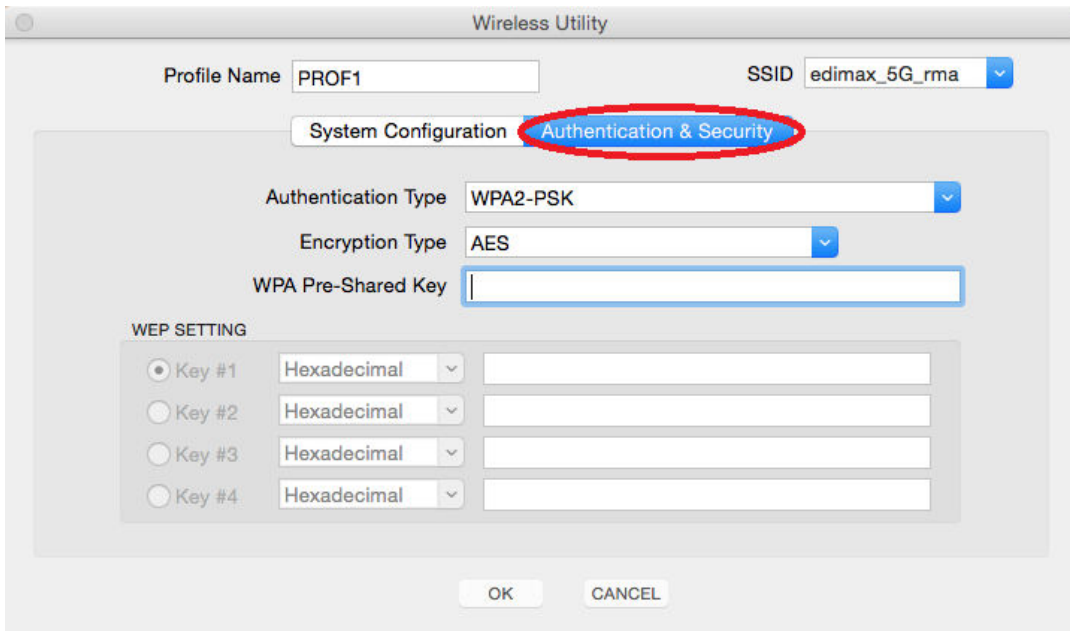
2. Under **Site Survey** tab, you will see the SSID network name of your 5Ghz wireless network. If you do not see your wireless network, please verify your WiFi router support 5Ghz WiFi network and use a channel number in 36, 40, 44, 48, 149, 153, 157, 161, or 165. Some WiFi routers use Automatically channel and use a DFS channel from 52 to 140, then the wireless adapter will not see the 5Ghz WiFi network.

3. Select your wireless network, click on **Add Profile**.



4. Click on **Authentication & Security** tab.

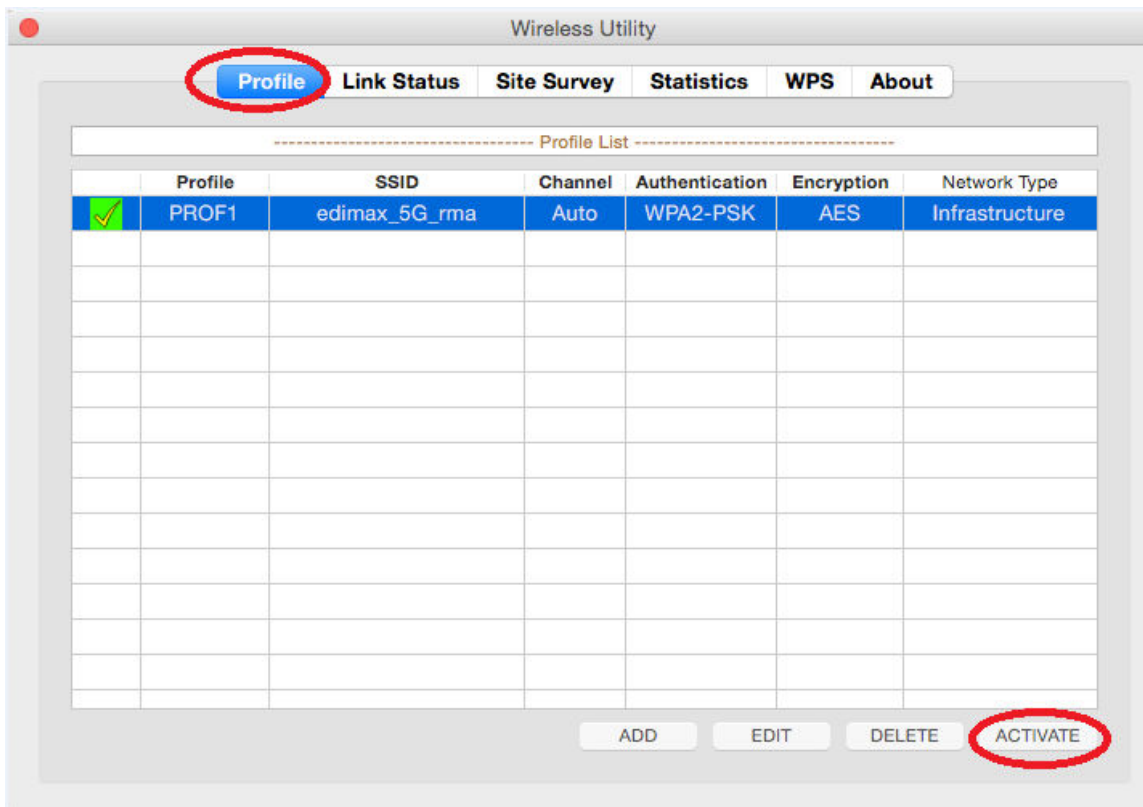
Both the Authentication Type and the Encryption Type should have been filled in for you. Do not change them. Just type in the wireless security password of your WiFi network into the box of **WPA Pre-Shared key**.



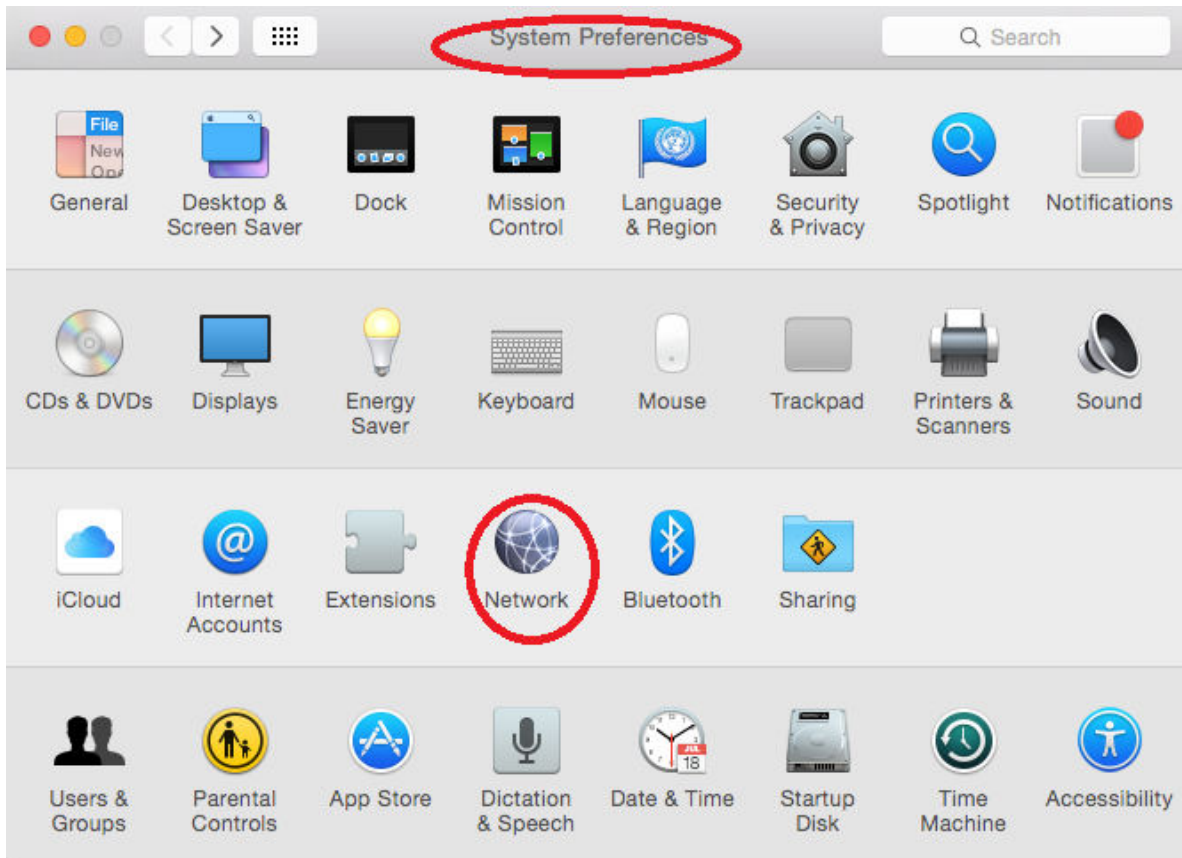
Click on **OK**.

5. You will get to **Profile** tab automatically.

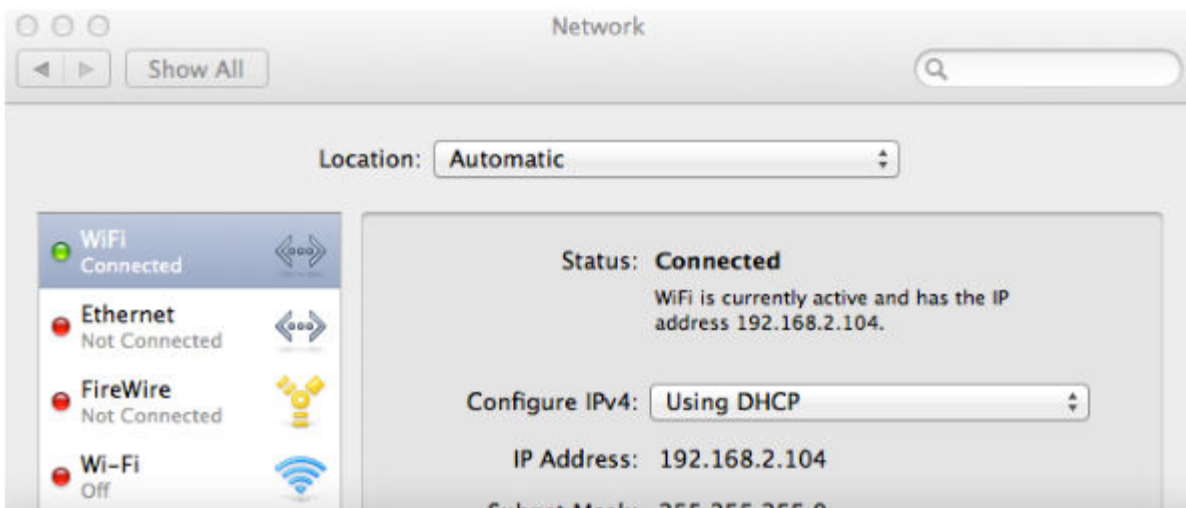
If you do not see a yellow check in front of the Profile, please select the Profile and click on **Activate**.



6. Click on the red X on the top left corner to close the Wireless Utility.
7. Go to **System Preferences** in your Macintosh. Go to **Network**



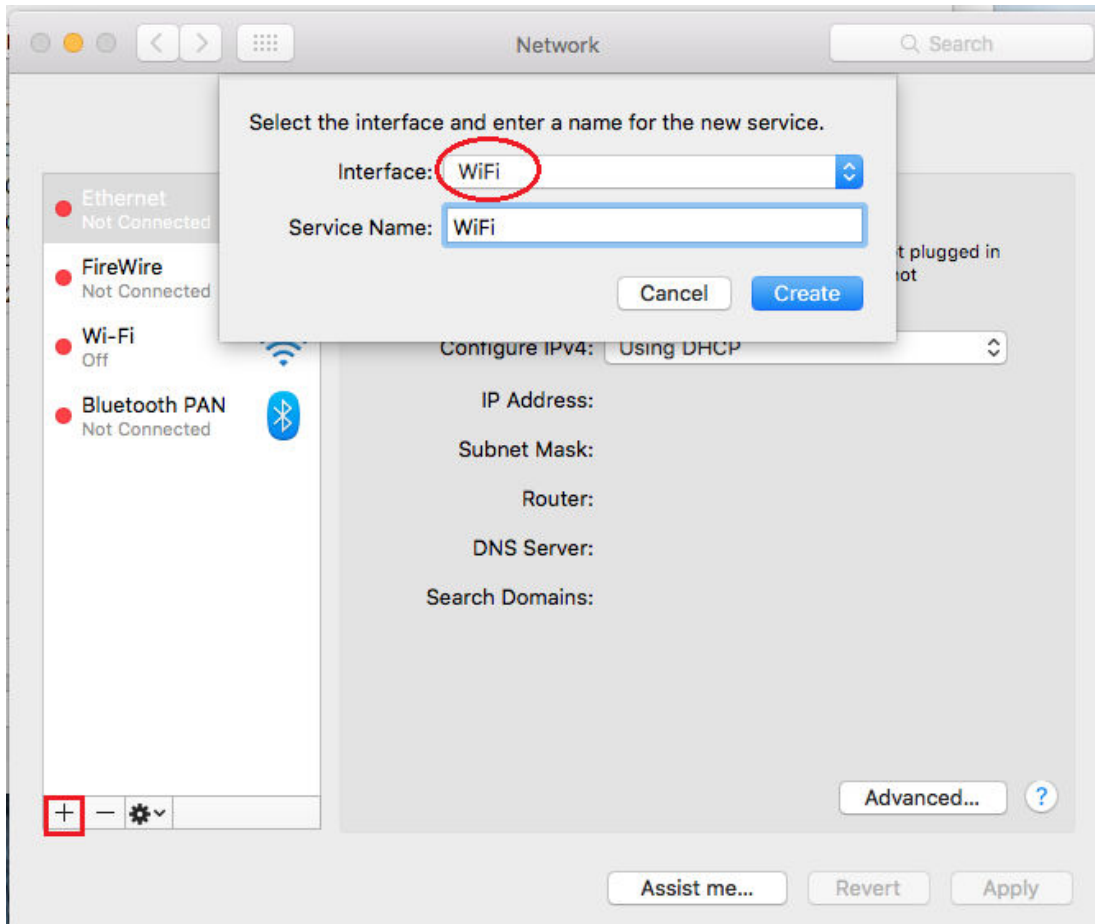
8. In **Network Preferences**, you will see a new **WiFi** adapter with a green dot. Click on **Apply** button.



Congratulations. The wireless adapter is connected to your WiFi network. You may open your web browser like Safari to access Internet now.

## Troubleshooting,

If you do not see the new WiFi adapter in **Network Preferences**, you can click on the **+** button to manually add the new **WiFi** adapter. Click on **Create** button. Then click on **Apply** button.



Please note the **Wi-Fi** adapter which has a hyphen between Wi and Fi is the built-in wireless adapter of your Macintosh. You may click on "**Turn Wi-Fi Off**" to turn off the built-in wireless adapter since our WiFi adapter is working fine.

